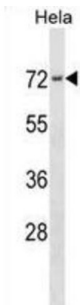


Protein Kinase C Substrate 80K-H (PRKCSH) Antibody

Catalogue No.: abx030806



This gene encodes the beta-subunit of glucosidase II, an N-linked glycan-processing enzyme in the endoplasmic reticulum (ER). This protein is an acidic phospho-protein known to be a substrate for protein kinase C. Mutations in this gene have been associated with the autosomal dominant polycystic liver disease (PCLD). Alternatively spliced transcript variants encoding distinct isoforms have been observed.

Target:	Protein Kinase C Substrate 80K-H (PRKCSH)
Clonality:	Polyclonal
Reactivity:	Human
Tested Applications:	ELISA, WB
Host:	Rabbit
Recommended dilutions:	WB: 1/1000. Optimal dilutions/concentrations should be determined by the end user.
Conjugation:	Unconjugated
Immunogen:	KLH-conjugated synthetic peptide between 6-35 amino acids from the N-terminal region of human PRKCSH.
Isotype:	IgG
Form:	Liquid
Purification:	Purified through a protein A column, followed by peptide affinity purification.
Storage:	Aliquot and store at -20°C. Avoid repeated freeze/thaw cycles.
UniProt Primary AC:	P14314 (UniProt , ExPASy)
KEGG:	hsa:5589

Datasheet

Version: 6.0.0
Revision date: 22 Dec 2024



String: [9606.ENSF00000466134](#)

Molecular Weight: Calculated MW: 59.4 kDa

Buffer: PBS containing 0.09% sodium azide.

Specificity: Predicted to react with Cow PRKCSH.

Note: This product is for research use only.

For Reference Only