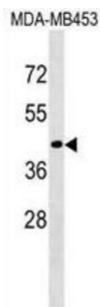


Cell Surface Glycoprotein CD200 Receptor 2 (CD200R2) Antibody

Catalogue No.: abx030822



CD200R1L may be a receptor for the CD200/OX2 cell surface glycoprotein (By similarity).

Target:	Cell Surface Glycoprotein CD200 Receptor 2 (CD200R2)
Clonality:	Polyclonal
Reactivity:	Human
Tested Applications:	ELISA, WB
Host:	Rabbit
Recommended dilutions:	WB: 1/1000. Optimal dilutions/concentrations should be determined by the end user.
Conjugation:	Unconjugated
Immunogen:	KLH-conjugated synthetic peptide between 63-92 amino acids from the N-terminal region of human CD200R1L.
Isotype:	IgG
Form:	Liquid
Purification:	Purified through a protein A column, followed by peptide affinity purification.
Storage:	Aliquot and store at -20°C. Avoid repeated freeze/thaw cycles.
UniProt Primary AC:	Q6Q8B3 (UniProt , ExpASY)
Gene Symbol:	CD200R1L
KEGG:	hsa:344807

Datasheet

Version: 2.0.0

Revision date: 11 Feb 2025



String: [9606.ENSF00000381272](#)

Molecular Weight: Calculated MW: 29.9 kDa

Buffer: PBS containing 0.09% sodium azide.

Note: This product is for research use only.

For Reference Only