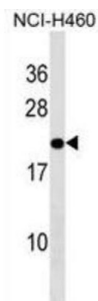


Transmembrane Emp24 Domain-Containing Protein 10 (TMED10) Antibody

Catalogue No.: abx030884



This gene is a member of the EMP24/GP25L/p24 family and encodes a protein with a GOLD domain. This type I membrane protein is localized to the plasma membrane and golgi cisternae and is involved in vesicular protein trafficking. The protein is also a member of a heteromeric secretase complex and regulates the complex's gamma-secretase activity without affecting its epsilon-secretase activity. Mutations in this gene have been associated with early-onset familial Alzheimer's disease. This gene has a pseudogene on chromosome 8.

Target: Transmembrane Emp24 Domain-Containing Protein 10 (TMED10)

Clonality: Polyclonal

Reactivity: Human

Tested Applications: ELISA, WB

Host: Rabbit

Recommended dilutions: WB: 1/1000. Optimal dilutions/concentrations should be determined by the end user.

Conjugation: Unconjugated

Immunogen: KLH-conjugated synthetic peptide between 156-185 amino acids from the C-terminal region of human TMED10.

Isotype: IgG

Form: Liquid

Purification: Purified through a protein A column, followed by peptide affinity purification.

Storage: Aliquot and store at -20°C. Avoid repeated freeze/thaw cycles.

UniProt Primary AC: P49755 ([UniProt](#), [ExPASy](#))

Datasheet

Version: 2.0.0
Revision date: 22 Nov 2024



KEGG: hsa:10972

String: [9606.ENSP00000303145](#)

Molecular Weight: Calculated MW: 25 kDa

Buffer: PBS containing 0.09% sodium azide.

Specificity: Predicted to react with Mouse, Rat, Cow and Rabbit TMED10.

Note: This product is for research use only.

For Reference Only