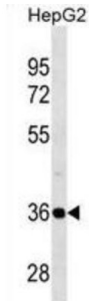


## 26S Proteasome Non-ATPase Regulatory Subunit 14 (PSMD14) Antibody

Catalogue No.: abx030886



PSMD14 is a component of the 26S proteasome, a multiprotein complex that degrades proteins targeted for destruction by the ubiquitin pathway (Spataro et al., 1997 [PubMed 9374539]).

<b>Target:</b>	26S Proteasome Non-ATPase Regulatory Subunit 14 (PSMD14)
<b>Clonality:</b>	Polyclonal
<b>Reactivity:</b>	Human
<b>Tested Applications:</b>	ELISA, WB
<b>Host:</b>	Rabbit
<b>Recommended dilutions:</b>	WB: 1/1000. Optimal dilutions/concentrations should be determined by the end user.
<b>Conjugation:</b>	Unconjugated
<b>Immunogen:</b>	KLH-conjugated synthetic peptide between 258-287 amino acids from the C-terminal region of human PSMD14.
<b>Isotype:</b>	IgG
<b>Form:</b>	Liquid
<b>Purification:</b>	Purified through a protein A column, followed by peptide affinity purification.
<b>Storage:</b>	Aliquot and store at -20°C. Avoid repeated freeze/thaw cycles.
<b>UniProt Primary AC:</b>	O00487 ( <a href="#">UniProt</a> , <a href="#">ExPASy</a> )
<b>Gene Symbol:</b>	PSMD14

# Datasheet

Version: 2.0.0  
Revision date: 09 Jan 2025

<b>GeneID:</b>	<a href="#">10213</a>
<b>OMIM:</b>	<a href="#">607173</a>
<b>HGNC:</b>	16889
<b>KEGG:</b>	hsa:10213
<b>Ensembl:</b>	ENSG00000115233
<b>String:</b>	<a href="#">9606.ENSP00000386541</a>
<b>Molecular Weight:</b>	Calculated MW: 34.6 kDa
<b>Buffer:</b>	PBS containing 0.09% sodium azide.
<b>Specificity:</b>	Predicted to react with Mouse PSMD14.
<b>Note:</b>	This product is for research use only.

For Reference Only