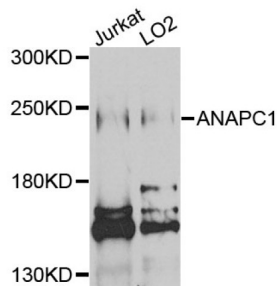


Anaphase-Promoting Complex Subunit 1 (ANAPC1) Antibody

Catalogue No.: abx002506



Western blot analysis of extracts of various cell lines, using ANAPC1 antibody (abx002506) at 1/1000 dilution.

ANAPC1 Antibody is a Rabbit Polyclonal antibody against ANAPC1. This gene encodes a subunit of the anaphase-promoting complex. This complex is an E3 ubiquitin ligase that regulates progression through the metaphase to anaphase portion of the cell cycle by ubiquitinating proteins which targets them for degradation.

Target:	Anaphase-Promoting Complex Subunit 1 (ANAPC1)
Clonality:	Polyclonal
Reactivity:	Human
Tested Applications:	WB
Host:	Rabbit
Recommended dilutions:	WB: 1/1000 - 1/2000. Optimal dilutions/concentrations should be determined by the end user.
Conjugation:	Unconjugated
Immunogen:	Recombinant fusion protein containing a sequence corresponding to amino acids 1-250 of human ANAPC1.
Isotype:	IgG
Form:	Liquid
Purification:	Purified by affinity chromatography.
Storage:	Aliquot and store at -20°C. Avoid repeated freeze/thaw cycles.
UniProt Primary AC:	Q9H1A4 (UniProt , ExPASy)
Gene Symbol:	ANAPC1

Datasheet

Version: 2.0.0
Revision date: 28 Nov 2024



GeneID: [64682](#)

NCBI Accession: NP_073153.1

String: [9606.ENSP00000339109](#)

Molecular Weight: Calculated MW: 217 kDa
Observed MW: 216 kDa

Buffer: PBS, pH 7.3, containing 0.02% sodium azide, 50% glycerol.

Concentration: > 0.2 mg/ml

Note: This product is for research use only.

For Reference Only