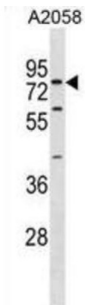


Synaptotagmin 16 (SYT16) Antibody

Catalogue No.: abx031134



SYT16 may be involved in the trafficking and exocytosis of secretory vesicles in non-neuronal tissues. Is Ca²⁺ independent.

Target:	Synaptotagmin 16 (SYT16)
Clonality:	Polyclonal
Reactivity:	Human
Tested Applications:	ELISA, WB
Host:	Rabbit
Recommended dilutions:	WB: 1/1000. Optimal dilutions/concentrations should be determined by the end user.
Conjugation:	Unconjugated
Immunogen:	KLH-conjugated synthetic peptide between 297-325 amino acids from the Central region of human SYT16.
Isotype:	IgG
Form:	Liquid
Purification:	Purified through a protein A column, followed by peptide affinity purification.
Storage:	Aliquot and store at -20°C. Avoid repeated freeze/thaw cycles.
UniProt Primary AC:	Q17RD7 (UniProt , ExPASy)
String:	9606.ENSP00000478637
Molecular Weight:	Calculated MW: 72.3 kDa

Datasheet

Version: 2.0.0

Revision date: 23 Apr 2025



Buffer: PBS containing 0.09% sodium azide.

Note: THIS PRODUCT IS FOR RESEARCH USE ONLY. NOT FOR USE IN DIAGNOSTIC, THERAPEUTIC OR COSMETIC PROCEDURES. NOT FOR HUMAN OR ANIMAL CONSUMPTION.

For Reference Only