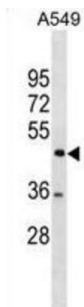


## Testis-Specific Y-Encoded-Like Protein 1 (TSPYL1) Antibody

Catalogue No.: abx031157



The protein encoded by this gene is found in the nucleolus and is similar to that of a family of genes on the Y-chromosome. This gene is intronless. Defects in this gene are a cause of sudden infant death with dysgenesis of the testes syndrome (SIDDT).

<b>Target:</b>	Testis-Specific Y-Encoded-Like Protein 1 (TSPYL1)
<b>Clonality:</b>	Polyclonal
<b>Reactivity:</b>	Human
<b>Tested Applications:</b>	ELISA, WB
<b>Host:</b>	Rabbit
<b>Recommended dilutions:</b>	WB: 1/1000. Optimal dilutions/concentrations should be determined by the end user.
<b>Conjugation:</b>	Unconjugated
<b>Immunogen:</b>	KLH-conjugated synthetic peptide between 343-372 amino acids from the C-terminal region of human TSPYL1.
<b>Isotype:</b>	IgG
<b>Form:</b>	Liquid
<b>Purification:</b>	Purified through a protein A column, followed by peptide affinity purification.
<b>Storage:</b>	Aliquot and store at -20°C. Avoid repeated freeze/thaw cycles.
<b>UniProt Primary AC:</b>	Q9H0U9 ( <a href="#">UniProt</a> , <a href="#">ExPASy</a> )
<b>Gene Symbol:</b>	TSPYL1

# Datasheet

Version: 2.0.0  
Revision date: 12 Oct 2024



**String:** [9606.ENSF00000357597](#)

**Molecular Weight:** Calculated MW: 49.2 kDa

**Buffer:** PBS containing 0.09% sodium azide.

**Specificity:** Predicted to react with Mouse TSPYL1.

**Note:** This product is for research use only.

For Reference Only