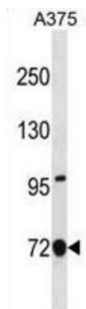


Annexin A6 (ANXA6) Antibody

Catalogue No.: abx031169



ANXA6 may associate with CD21. May regulate the release of Ca (2+) from intracellular stores.

Target: Annexin A6 (ANXA6)

Clonality: Polyclonal

Reactivity: Human

Tested Applications: ELISA, WB

Host: Rabbit

Recommended dilutions: WB: 1/1000. Optimal dilutions/concentrations should be determined by the end user.

Conjugation: Unconjugated

Immunogen: KLH-conjugated synthetic peptide between 147-175 amino acids from the C-terminal region of human ANXA6.

Isotype: IgG

Form: Liquid

Purification: Purified through a protein A column, followed by peptide affinity purification.

Storage: Aliquot and store at -20°C. Avoid repeated freeze/thaw cycles.

UniProt Primary AC: P08133 ([UniProt](#), [ExPASy](#))

KEGG: hsa:309

String: [9606.ENSP00000346550](#)

Datasheet

Version: 2.0.0
Revision date: 03 Dec 2024



Molecular Weight:	Calculated MW: 75.9 kDa
Buffer:	PBS containing 0.09% sodium azide.
Specificity:	Predicted to react with Cow ANXA6.
Note:	This product is for research use only.

For Reference Only