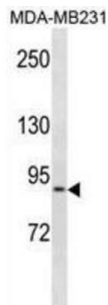


## Kin of IRRE-Like Protein 1 (KIRREL) Antibody

Catalogue No.: abx031254



NEPH1 is a member of the nephrin-like protein family, which includes NEPH2 (MIM 607761) and NEPH3 (MIM 607762). The cytoplasmic domains of these proteins interact with the C terminus of podocin (NPHS2; MIM 604766), and the genes are expressed in kidney podocytes, cells involved in ensuring size and charge-selective ultrafiltration (Sellin et al., 2003 [PubMed 12424224]).

**Target:** Kin of IRRE-Like Protein 1 (KIRREL)

**Clonality:** Polyclonal

**Reactivity:** Human

**Tested Applications:** ELISA, WB

**Host:** Rabbit

**Recommended dilutions:** WB: 1/1000. Optimal dilutions/concentrations should be determined by the end user.

**Conjugation:** Unconjugated

**Immunogen:** KLH-conjugated synthetic peptide between 505-534 amino acids from the C-terminal region of human KIRREL.

**Isotype:** IgG

**Form:** Liquid

**Purification:** Purified through a protein A column, followed by peptide affinity purification.

**Storage:** Aliquot and store at -20°C. Avoid repeated freeze/thaw cycles.

**UniProt Primary AC:** Q96J84 ([UniProt](#), [ExPASy](#))

**Gene Symbol:** KIRREL1

# Datasheet

Version: 3.0.0  
Revision date: 13 Mar 2025



**KEGG:** hsa:55243

**String:** [9606.ENSP00000352138](#)

**Molecular Weight:** Calculated MW: 83.5 kDa

**Buffer:** PBS containing 0.09% sodium azide.

**Specificity:** Predicted to react with Mouse and Rat KIRREL1.

**Note:** THIS PRODUCT IS FOR RESEARCH USE ONLY. NOT FOR USE IN DIAGNOSTIC, THERAPEUTIC OR COSMETIC PROCEDURES. NOT FOR HUMAN OR ANIMAL CONSUMPTION.

For Reference Only