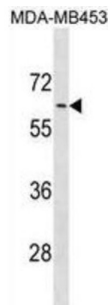


Alpha 1B Adrenergic Receptor (ADRA1B) Antibody

Catalogue No.: abx031294



Alpha-1-adrenergic receptors (alpha-1-ARs) are members of the G protein-coupled receptor superfamily. They activate mitogenic responses and regulate growth and proliferation of many cells. There are 3 alpha-1-AR subtypes: alpha-1A, 1B and 1D, all of which signal through the Gq/11 family of G-proteins and different subtypes show different patterns of activation. This gene encodes alpha-1B-adrenergic receptor, which induces neoplastic transformation when transfected into NIH 3T3 fibroblasts and other cell lines. Thus, this normal cellular gene is identified as a protooncogene. This gene comprises 2 exons and a single large intron of at least 20 kb that interrupts the coding region.

Target:	Alpha 1B Adrenergic Receptor (ADRA1B)
Clonality:	Polyclonal
Reactivity:	Human
Tested Applications:	ELISA, WB
Host:	Rabbit
Recommended dilutions:	WB: 1/1000. Optimal dilutions/concentrations should be determined by the end user.
Conjugation:	Unconjugated
Immunogen:	KLH-conjugated synthetic peptide between 380-409 amino acids from the C-terminal region of human ADRA1B.
Isotype:	IgG
Form:	Liquid
Purification:	Purified through a protein A column, followed by peptide affinity purification.
Storage:	Aliquot and store at -20°C. Avoid repeated freeze/thaw cycles.
UniProt Primary AC:	P35368 (UniProt , ExpASY)

Datasheet

Version: 3.0.0

Revision date: 17 Sep 2024



Gene Symbol: ADRA1B

KEGG: hsa:147

String: [9606.ENSP00000306662](#)

Molecular Weight: Calculated MW: 56.8 kDa

Buffer: PBS containing 0.09% sodium azide.

Specificity: Predicted to react with Mouse and Rat ADRA1B.

Note: This product is for research use only.

For Reference Only