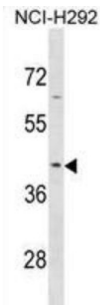


Serpin B9 (SERPINB9) Antibody

Catalogue No.: abx031295



PI9 belongs to the large superfamily of serine proteinase inhibitors (serpins), which bind to and inactivate serine proteinases. These interactions are involved in many cellular processes, including coagulation, fibrinolysis, complement fixation, matrix remodeling, and apoptosis (Sprecher et al., 1995 [PubMed 8530382]).

Target:	Serpin B9 (SERPINB9)
Clonality:	Polyclonal
Reactivity:	Human
Tested Applications:	ELISA, WB
Host:	Rabbit
Recommended dilutions:	WB: 1/1000. Optimal dilutions/concentrations should be determined by the end user.
Conjugation:	Unconjugated
Immunogen:	KLH-conjugated synthetic peptide between 122-150 amino acids from the Central region of human SERPINB9.
Isotype:	IgG
Form:	Liquid
Purification:	Purified through a protein A column, followed by peptide affinity purification.
Storage:	Aliquot and store at -20°C. Avoid repeated freeze/thaw cycles.
UniProt Primary AC:	P50453 (UniProt , ExpASY)
KEGG:	hsa:5272

Datasheet

Version: 1.0.0
Revision date: 03 Feb 2025



String: [9606.ENSF00000370074](#)

Molecular Weight: Calculated MW: 42.4 kDa

Buffer: PBS containing 0.09% sodium azide.

Note: This product is for research use only.

For Reference Only