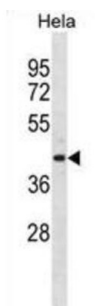


ADP Ribosylarginine Hydrolase (ADPRH) Antibody

Catalogue No.: abx031332



The enzyme encoded by this gene catalyzes removal of mono-ADP-ribose from arginine residues of proteins in the ADP-ribosylation cycle. Unlike the rat and mouse enzymes, which require DTT for maximal activity, the human enzyme is DTT-independent.

Target: ADP Ribosylarginine Hydrolase (ADPRH)

Clonality: Polyclonal

Reactivity: Human

Tested Applications: ELISA, WB

Host: Rabbit

Recommended dilutions: WB: 1/1000. Optimal dilutions/concentrations should be determined by the end user.

Conjugation: Unconjugated

Immunogen: KLH-conjugated synthetic peptide between 306-334 amino acids from the C-terminal region of human ADPRH.

Isotype: IgG

Form: Liquid

Purification: Purified through a protein A column, followed by peptide affinity purification.

Storage: Aliquot and store at -20°C. Avoid repeated freeze/thaw cycles.

UniProt Primary AC: P54922 ([UniProt](#), [ExPASy](#))

KEGG: hsa:141

Datasheet

Version: 3.0.0

Revision date: 25 Mar 2025



String: [9606.ENSPO0000420200](#)

Molecular Weight: Calculated MW: 39.5 kDa

Buffer: PBS containing 0.09% sodium azide.

Specificity: Predicted to react with Cow ADPRH.

Note: THIS PRODUCT IS FOR RESEARCH USE ONLY. NOT FOR USE IN DIAGNOSTIC, THERAPEUTIC OR COSMETIC PROCEDURES. NOT FOR HUMAN OR ANIMAL CONSUMPTION.

For Reference Only