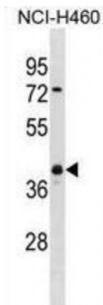


Ubiquitin Carboxyl Terminal Hydrolase L5 (UCHL5) Antibody

Catalogue No.: abx031361



Protease that specifically cleaves 'Lys-48'-linked polyubiquitin chains. Deubiquitinating enzyme associated with the 19S regulatory subunit of the 26S proteasome.

Target:	Ubiquitin Carboxyl Terminal Hydrolase L5 (UCHL5)
Clonality:	Polyclonal
Reactivity:	Human
Tested Applications:	ELISA, WB
Host:	Rabbit
Recommended dilutions:	WB: 1/1000. Optimal dilutions/concentrations should be determined by the end user.
Conjugation:	Unconjugated
Immunogen:	KLH-conjugated synthetic peptide between 136-164 amino acids from the Central region of human UCHL5.
Isotype:	IgG
Form:	Liquid
Purification:	Purified through a protein A column, followed by peptide affinity purification.
Storage:	Aliquot and store at -20°C. Avoid repeated freeze/thaw cycles.
UniProt Primary AC:	Q9Y5K5 (UniProt , ExPASy)
Gene Symbol:	UCHL5

Datasheet

Version: 2.0.0
Revision date: 14 Aug 2024



String: [9606.ENSF00000356425](#)

Molecular Weight: Calculated MW: 37.6 kDa

Buffer: PBS containing 0.09% sodium azide.

Note: This product is for research use only.

For Reference Only