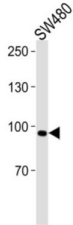


## Anoctamin 6 (ANO6) Antibody

Catalogue No.: abx031472



May act as a calcium-activated chloride channel.

<b>Target:</b>	Anoctamin 6 (ANO6)
<b>Clonality:</b>	Polyclonal
<b>Reactivity:</b>	Human
<b>Tested Applications:</b>	ELISA, WB
<b>Host:</b>	Rabbit
<b>Recommended dilutions:</b>	WB: 1/1000. Optimal dilutions/concentrations should be determined by the end user.
<b>Conjugation:</b>	Unconjugated
<b>Immunogen:</b>	KLH-conjugated synthetic peptide between 68-96 amino acids from the N-terminal region of human ANO6.
<b>Isotype:</b>	IgG
<b>Form:</b>	Liquid
<b>Purification:</b>	Purified through a protein A column, followed by peptide affinity purification.
<b>Storage:</b>	Aliquot and store at -20°C. Avoid repeated freeze/thaw cycles.
<b>UniProt Primary AC:</b>	Q4KMQ2 ( <a href="#">UniProt</a> , <a href="#">ExPASy</a> )
<b>NCBI Accession:</b>	NP_001020527.2, NP_001136150.1, NP_001136151.1, NP_001191732.1
<b>KEGG:</b>	hsa:196527

# Datasheet

Version: 4.0.0

Revision date: 25 Nov 2024



**String:** [9606.ENSF00000409126](#)

**Molecular Weight:** Calculated MW: 106 kDa

**Buffer:** PBS containing 0.09% sodium azide.

**Note:** This product is for research use only.

For Reference Only