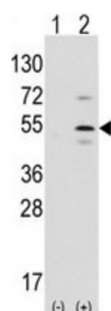
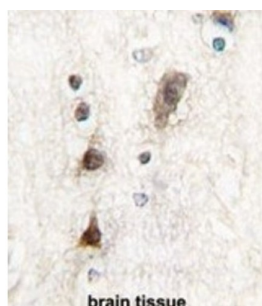


Pancreas Specific Transcription Factor 1a (Ptf1a) Antibody

Catalogue No.: abx031635



Ptf1a is a component of the pancreas transcription factor 1 complex (PTF1) and is known to have a role in mammalian pancreatic development. The protein plays a role in determining whether cells allocated to the pancreatic buds continue towards pancreatic organogenesis or revert back to duodenal fates. This protein is thought to be involved in the maintenance of exocrine pancreas-specific gene expression including elastase 1 and amylase. Mutations in the Ptf1a gene cause cerebellar agenesis and loss of expression is seen in ductal type pancreas cancers.

Target: Pancreas Specific Transcription Factor 1a (Ptf1a)

Clonality: Polyclonal

Reactivity: Human

Tested Applications: ELISA, WB, IHC

Host: Rabbit

Recommended dilutions: WB: 1/1000, IHC-P: 1/10 - 1/50. Not tested in IHC-F. Optimal dilutions/concentrations should be determined by the end user.

Conjugation: Unconjugated

Immunogen: KLH-conjugated synthetic peptide between 12-43 amino acids from the N-terminal region of human Ptf1a.

Isotype: IgG

Datasheet

Version: 3.0.0
Revision date: 16 Mar 2025



Form:	Liquid
Purification:	Purified through a protein A column, followed by peptide affinity purification.
Storage:	Aliquot and store at -20°C. Avoid repeated freeze/thaw cycles.
UniProt Primary AC:	Q7RTS3 (UniProt , ExPASy)
Gene Symbol:	PTF1A
KEGG:	hsa:256297
String:	9606.ENSP00000365687
Molecular Weight:	Calculated MW: 35 kDa
Buffer:	PBS containing 0.09% sodium azide.
Specificity:	Predicted to react with Rat PTF1A.
Note:	THIS PRODUCT IS FOR RESEARCH USE ONLY. NOT FOR USE IN DIAGNOSTIC, THERAPEUTIC OR COSMETIC PROCEDURES. NOT FOR HUMAN OR ANIMAL CONSUMPTION.

For Reference Only