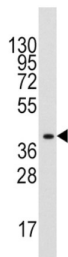
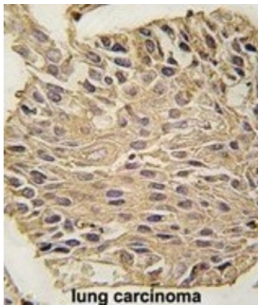


Fructose-Bisphosphate Aldolase A (ALDOA) Antibody

Catalogue No.: abx031667



Aldolase A (fructose-bisphosphate aldolase) is a glycolytic enzyme that catalyzes the reversible conversion of fructose-1, 6-bisphosphate to glyceraldehyde 3-phosphate and dihydroxyacetone phosphate. Three aldolase isozymes (A, B, and C), encoded by three different genes, are differentially expressed during development. Aldolase A is found in the developing embryo and is produced in even greater amounts in adult muscle. Aldolase A expression is repressed in adult liver, kidney and intestine and similar to aldolase C levels in brain and other nervous tissue. Aldolase A deficiency has been associated with myopathy and hemolytic anemia.

Target: Fructose-Bisphosphate Aldolase A (ALDOA)

Clonality: Polyclonal

Reactivity: Human, Mouse

Tested Applications: ELISA, WB, IHC

Host: Rabbit

Recommended dilutions: WB: 1/1000, IHC-P: 1/10 - 1/50. Not tested in IHC-F. Optimal dilutions/concentrations should be determined by the end user.

Conjugation: Unconjugated

Immunogen: KLH-conjugated synthetic peptide between 303-331 amino acids from the C-terminal region of human ALDOA.

Isotype: IgG

Datasheet

Version: 1.0.0
Revision date: 06 Oct 2024



Form:	Liquid
Purification:	Purified Rabbit Polyclonal Antibody.
Storage:	Aliquot and store at -20°C. Avoid repeated freeze/thaw cycles.
UniProt Primary AC:	P04075 (UniProt , ExpASY)
Gene Symbol:	ALDOA
GeneID:	226
OMIM:	103850
HGNC:	414
KEGG:	hsa:226
Ensembl:	ENSG00000149925
String:	9606.ENSP00000378669
Molecular Weight:	Calculated MW: 39.4 kDa
Buffer:	PBS containing 0.09% sodium azide.
Specificity:	Predicted to react with Rabbit ALDOA.
Note:	This product is for research use only.

For Reference Only