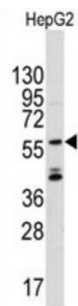
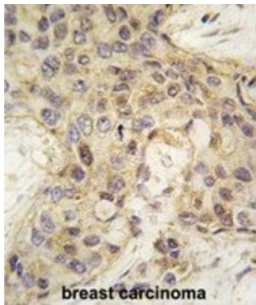


# Datasheet

Version: 4.0.0  
Revision date: 31 Dec 2024

## Protein Angel Homolog 2 (ANGEL2) Antibody

Catalogue No.: abx031686



ANGEL 2 is a member of the CCR4/nocturin family.

<b>Target:</b>	Protein Angel Homolog 2 (ANGEL2)
<b>Clonality:</b>	Polyclonal
<b>Reactivity:</b>	Human
<b>Tested Applications:</b>	ELISA, WB, IHC
<b>Host:</b>	Rabbit
<b>Recommended dilutions:</b>	WB: 1/1000, IHC-P: 1/10 - 1/50. Not tested in IHC-F. Optimal dilutions/concentrations should be determined by the end user.
<b>Conjugation:</b>	Unconjugated
<b>Immunogen:</b>	KLH-conjugated synthetic peptide between 108-138 amino acids from the Central region of human ANGEL2.
<b>Isotype:</b>	IgG
<b>Form:</b>	Liquid
<b>Purification:</b>	Purified Rabbit Polyclonal Antibody.

# Datasheet

Version: 4.0.0  
Revision date: 31 Dec 2024



**Storage:** Aliquot and store at -20°C. Avoid repeated freeze/thaw cycles.

**UniProt Primary AC:** Q5VTE6 ([UniProt](#), [ExPASy](#))

**KEGG:** hsa:90806

**String:** [9606.ENSP00000355929](#)

**Molecular Weight:** Calculated MW: 62.3 kDa

**Buffer:** PBS containing 0.09% sodium azide.

**Note:** This product is for research use only.

For Reference Only