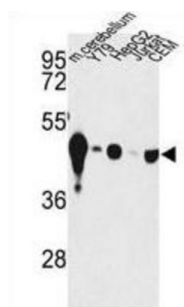
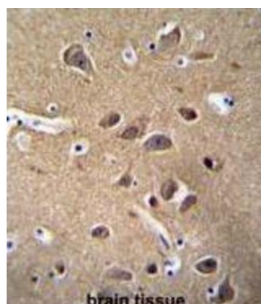


Gamma-Enolase (ENO2) Antibody

Catalogue No.: abx031705



NSE is one of the three enolase isoenzymes found in mammals. This isoenzyme, a homodimer, is found in mature neurons and cells of neuronal origin. A switch from alpha enolase to gamma enolase occurs in neural tissue during development in rats and primates.

Target: Gamma-Enolase (ENO2)

Clonality: Polyclonal

Reactivity: Human, Mouse, Rat

Tested Applications: ELISA, WB, IHC

Host: Rabbit

Recommended dilutions: WB: 1/4000, IHC-P: 1/500. Not tested in IHC-F. Optimal dilutions/concentrations should be determined by the end user.

Conjugation: Unconjugated

Immunogen: KLH-conjugated synthetic peptide between 6-32 amino acids from human NSE.

Isotype: IgG

Form: Liquid

Datasheet

Version: 3.0.0
Revision date: 24 Apr 2025



Purification:	Purified through a protein A column, followed by peptide affinity purification.
Storage:	Aliquot and store at -20°C. Avoid repeated freeze/thaw cycles.
UniProt Primary AC:	P09104 (UniProt , ExPASy)
Gene Symbol:	ENO2
GeneID:	2026
OMIM:	131360
NCBI Accession:	NP_001966.1, NM_001975.2
HGNC:	3353
KEGG:	hsa:2026
Ensembl:	ENSG00000111674
String:	9606.ENSP00000437402
Molecular Weight:	Calculated MW: 47.3 kDa
Buffer:	PBS containing 0.09% sodium azide.
Specificity:	Predicted to react with Rat ENO2.
Note:	THIS PRODUCT IS FOR RESEARCH USE ONLY. NOT FOR USE IN DIAGNOSTIC, THERAPEUTIC OR COSMETIC PROCEDURES. NOT FOR HUMAN OR ANIMAL CONSUMPTION.