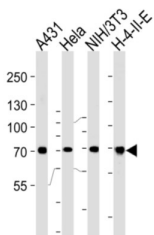
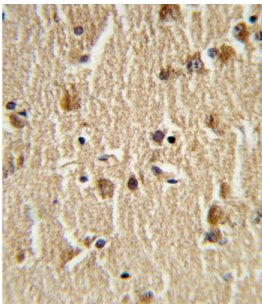
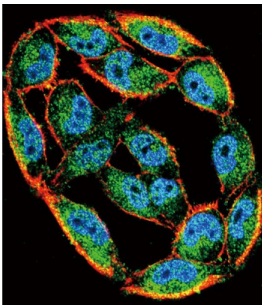


## Heat Shock 70 kDa Protein 8 (HSPA8) Antibody

Catalogue No.: abx031762



HSPA8 belongs to the heat shock protein 70 family which contains both heat-inducible and constitutively expressed members. The latter are called heat-shock cognate proteins. HSPA8 is a heat-shock cognate protein. This protein binds to nascent polypeptides to facilitate correct folding. The protein also functions as an ATPase in the disassembly of clathrin-coated vesicles during transport of membrane components through the cell.

**Target:** Heat Shock 70 kDa Protein 8 (HSPA8)

**Clonality:** Polyclonal

**Reactivity:** Human, Mouse, Rat

**Tested Applications:** ELISA, WB, IHC, IF/ICC, FCM

**Host:** Rabbit

**Recommended dilutions:** WB: 1/1000, IHC-P: 1/10 - 1/50, IF/ICC: 1/10 - 1/50, FCM: 1/10 - 1/50. Not tested in IHC-F. Optimal dilutions/concentrations should be determined by the end user.

# Datasheet

Version: 2.0.0  
Revision date: 02 Apr 2025



<b>Conjugation:</b>	Unconjugated
<b>Immunogen:</b>	KLH-conjugated synthetic peptide between 82-110 amino acids from the N-terminal region of human HSPA8.
<b>Isotype:</b>	IgG
<b>Form:</b>	Liquid
<b>Purification:</b>	Purified Rabbit Polyclonal Antibody.
<b>Storage:</b>	Aliquot and store at -20°C. Avoid repeated freeze/thaw cycles.
<b>UniProt Primary AC:</b>	P11142 ( <a href="#">UniProt</a> , <a href="#">ExPASy</a> )
<b>Molecular Weight:</b>	Calculated MW: 70.9 kDa
<b>Buffer:</b>	PBS containing 0.09% sodium azide.
<b>Specificity:</b>	Predicted to react with Cow, Chicken, Hamster and Horse HSPA8.
<b>Note:</b>	THIS PRODUCT IS FOR RESEARCH USE ONLY. NOT FOR USE IN DIAGNOSTIC, THERAPEUTIC OR COSMETIC PROCEDURES. NOT FOR HUMAN OR ANIMAL CONSUMPTION.

For Reference Only