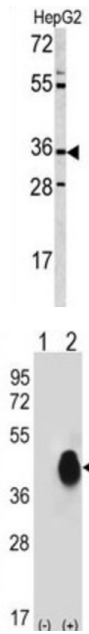
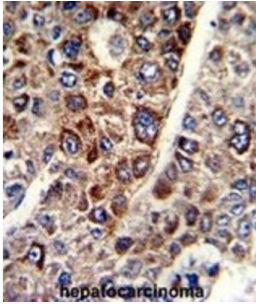


Cyclic ADP Ribose Hydrolase (CD38) Antibody

Catalogue No.: abx031764



CD38 is a novel multifunctional ectoenzyme widely expressed in cells and tissues especially in leukocytes. CD38 also functions in cell adhesion, signal transduction and calcium signaling.

Target: Cyclic ADP Ribose Hydrolase (CD38)

Clonality: Polyclonal

Reactivity: Human

Tested Applications: ELISA, WB, IHC, IF/ICC, FCM

Host: Rabbit

Recommended dilutions: WB: 1/1000, IHC-P: 1/50 - 1/100, IF/ICC: 1/10 - 1/50, FCM: 1/10 - 1/50. Not tested in IHC-F.
Optimal dilutions/concentrations should be determined by the end user.

Datasheet

Version: 2.0.0
Revision date: 04 Dec 2024



Conjugation:	Unconjugated
Immunogen:	KLH-conjugated synthetic peptide between 241-270 amino acids from the C-terminal region of human CD38.
Isotype:	IgG
Form:	Liquid
Purification:	Purified Rabbit Polyclonal Antibody.
Storage:	Aliquot and store at -20°C. Avoid repeated freeze/thaw cycles.
UniProt Primary AC:	P28907 (UniProt , ExPASy)
KEGG:	hsa:952
String:	9606.ENSP00000226279
Molecular Weight:	Calculated MW: 34.3 kDa
Buffer:	PBS containing 0.09% sodium azide.
Specificity:	Predicted to react with Monkey CD38.
Note:	This product is for research use only.

For Reference Only