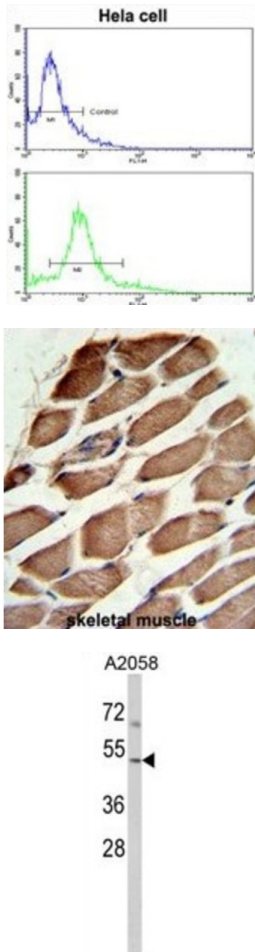


Actin Related Protein 3 (ACTR3) Antibody

Catalogue No.: abx031774



ACTR3 is known to be a major constituent of the ARP2/3 complex. This complex is located at the cell surface and is essential to cell shape and motility through lamellipodial actin assembly and protrusion.

Target: Actin Related Protein 3 (ACTR3)

Clonality: Polyclonal

Reactivity: Human

Tested Applications: ELISA, WB, IHC, FCM

Host: Rabbit

Recommended dilutions: WB: 1/1000, IHC-P: 1/50 - 1/100, FCM: 1/10 - 1/50. Not tested in IHC-F. Optimal dilutions/concentrations should be determined by the end user.

Datasheet

Version: 1.0.0
Revision date: 09 Nov 2024



Conjugation:	Unconjugated
Immunogen:	KLH-conjugated synthetic peptide between 380-407 amino acids from the C-terminal region of human ACTR3.
Isotype:	IgG
Form:	Liquid
Purification:	Purified Rabbit Polyclonal Antibody.
Storage:	Aliquot and store at -20°C. Avoid repeated freeze/thaw cycles.
UniProt Primary AC:	P61158 (UniProt , ExPASy)
KEGG:	hsa:10096
String:	9606.ENSP00000263238
Molecular Weight:	Calculated MW: 47.4 kDa
Buffer:	PBS containing 0.09% sodium azide.
Specificity:	Predicted to react with Mouse, Rat, Cow and Xenopus ACTR3.
Note:	This product is for research use only.

For Reference Only