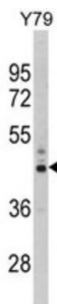
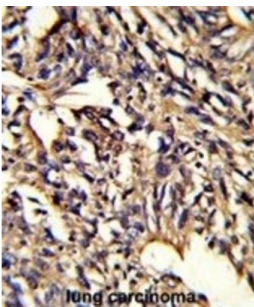
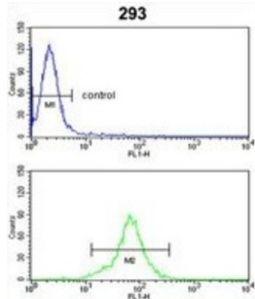


## 26S Proteasome Non-ATPase Regulatory Subunit 13 (PSMD13) Antibody

Catalogue No.: abx031786



26S Proteasome Non-ATPase Regulatory Subunit 13 (PSMD13) acts as a regulatory subunit of the 26S proteasome which is involved in the ATP-dependent degradation of ubiquitinated proteins. The 26S proteasome is a multicatalytic proteinase complex with a highly ordered structure composed of 2 complexes, a 20S core and a 19S regulator. The 20S core is composed of 4 rings of 28 non-identical subunits; 2 rings are composed of 7 alpha subunits and 2 rings are composed of 7 beta subunits. The 19S regulator is composed of a base, which contains 6 ATPase subunits and 2 non-ATPase subunits, and a lid, which contains up to 10 non-ATPase subunits. Proteasomes are distributed throughout eukaryotic cells at a high concentration and cleave peptides in an ATP/ubiquitin-dependent process in a non-lysosomal pathway. An essential function of a modified proteasome, the immunoproteasome, is the processing of class I MHC peptides. This gene encodes a non-ATPase subunit of the 19S regulator. Two transcripts encoding different isoforms have been described.

**Target:** 26S Proteasome Non-ATPase Regulatory Subunit 13 (PSMD13)

**Clonality:** Polyclonal

**Reactivity:** Human

# Datasheet

Version: 2.0.0  
Revision date: 23 Dec 2024



<b>Tested Applications:</b>	ELISA, WB, IHC, FCM
<b>Host:</b>	Rabbit
<b>Recommended dilutions:</b>	WB: 1/1000, IHC-P: 1/50 - 1/100, FCM: 1/10 - 1/50. Not tested in IHC-F. Optimal dilutions/concentrations should be determined by the end user.
<b>Conjugation:</b>	Unconjugated
<b>Immunogen:</b>	KLH-conjugated synthetic peptide between 269-298 amino acids from the C-terminal region of human PSMD13.
<b>Isotype:</b>	IgG
<b>Form:</b>	Liquid
<b>Purification:</b>	Purified through a protein A column, followed by peptide affinity purification.
<b>Storage:</b>	Aliquot and store at -20°C. Avoid repeated freeze/thaw cycles.
<b>UniProt Primary AC:</b>	Q9UNM6 ( <a href="#">UniProt</a> , <a href="#">ExPASy</a> )
<b>Gene Symbol:</b>	PSMD13
<b>GeneID:</b>	<a href="#">5719</a>
<b>OMIM:</b>	<a href="#">603481</a>
<b>NCBI Accession:</b>	NP_002808.3, NM_002817.3, NP_787128.2, NM_175932.2
<b>HGNC:</b>	9558
<b>Ensembl:</b>	ENSG00000185627
<b>Molecular Weight:</b>	Calculated MW: 42.9 kDa
<b>Buffer:</b>	PBS containing 0.09% sodium azide.
<b>Specificity:</b>	Predicted to react with Mouse, Rat and Chicken PSMD13.
<b>Note:</b>	This product is for research use only.