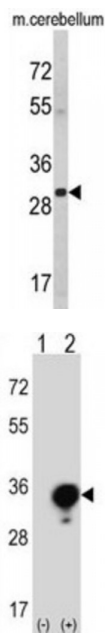
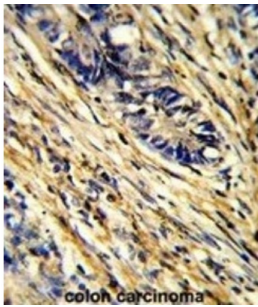


## 14-3-3 Protein Gamma (YWHAG) Antibody

Catalogue No.: abx031808



YWHAG belongs to the 14-3-3 family of proteins which mediate signal transduction by binding to phosphoserine-containing proteins. This highly conserved protein family is found in both plants and mammals, and this protein is 100% identical to the rat ortholog. It is induced by growth factors in human vascular smooth muscle cells, and is also highly expressed in skeletal and heart muscles, suggesting an important role for this protein in muscle tissue. It has been shown to interact with RAF1 and protein kinase C, proteins involved in various signal transduction pathways.

**Target:** 14-3-3 Protein Gamma (YWHAG)

**Clonality:** Polyclonal

**Reactivity:** Human, Mouse

**Tested Applications:** ELISA, WB, IHC, FCM

**Host:** Rabbit

# Datasheet

Version: 2.0.0  
Revision date: 18 Apr 2024



**Recommended dilutions:** WB: 1/1000, IHC-P: 1/50 - 1/100, FCM: 1/10 - 1/50. Not tested in IHC-F. Optimal dilutions/concentrations should be determined by the end user.

**Conjugation:** Unconjugated

**Immunogen:** KLH-conjugated synthetic peptide between 136-164 amino acids from the Central region of human YWHAG.

**Isotype:** IgG

**Form:** Liquid

**Purification:** Purified Rabbit Polyclonal Antibody.

**Storage:** Aliquot and store at -20°C. Avoid repeated freeze/thaw cycles.

**UniProt Primary AC:** P61981 ([UniProt](#), [ExpASY](#))

**KEGG:** hsa:7532

**String:** [9606.ENSP00000306330](#)

**Molecular Weight:** Calculated MW: 28.3 kDa

**Buffer:** PBS containing 0.09% sodium azide.

**Specificity:** Predicted to react with Rat, Cow, Chicken, Sheep and Xenopus YWHAG.

**Note:** This product is for research use only.

For Reference Only