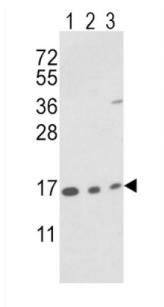
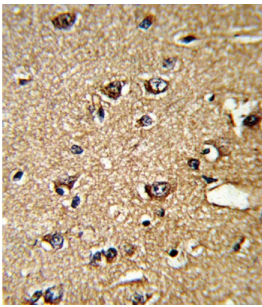
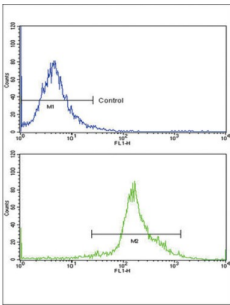


Peptidylprolyl Isomerase A / CYPA (PPIA) Antibody

Catalogue No.: abx031809



PPIA is a member of the peptidyl-prolyl cis-trans isomerase (PPIase) family. PPIases catalyze the cis-trans isomerization of proline imidic peptide bonds in oligopeptides and accelerate the folding of proteins. This protein is a cyclosporin binding-protein and may play a role in cyclosporin A-mediated immunosuppression. The protein can also interact with several HIV proteins, including p55 gag, Vpr, and capsid protein, and has been shown to be necessary for the formation of infectious HIV virions.

Target: Peptidylprolyl Isomerase A / CYPA (PPIA)

Clonality: Polyclonal

Reactivity: Human, Mouse

Tested Applications: ELISA, WB, IHC, FCM

Host: Rabbit

Recommended dilutions: WB: 1/1000, IHC-P: 1/10 - 1/50, FCM: 1/10 - 1/50. Not tested in IHC-F. Optimal dilutions/concentrations should be determined by the end user.

Datasheet

Version: 1.0.0
Revision date: 13 Mar 2025



Conjugation:	Unconjugated
Immunogen:	KLH-conjugated synthetic peptide between 8-37 amino acids from the N-terminal region of human PPIA.
Isotype:	IgG
Form:	Liquid
Purification:	Purified Rabbit Polyclonal Antibody.
Storage:	Aliquot and store at -20°C. Avoid repeated freeze/thaw cycles.
UniProt Primary AC:	P62937 (UniProt , ExPASy)
KEGG:	hsa:5478
String:	9606.ENSP00000419425
Molecular Weight:	Calculated MW: 18 kDa
Buffer:	PBS containing 0.09% sodium azide.
Specificity:	Predicted to react with Rat, Cow, Pig and Hamster PPIA.
Note:	THIS PRODUCT IS FOR RESEARCH USE ONLY. NOT FOR USE IN DIAGNOSTIC, THERAPEUTIC OR COSMETIC PROCEDURES. NOT FOR HUMAN OR ANIMAL CONSUMPTION.

For Reference Only