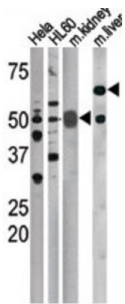
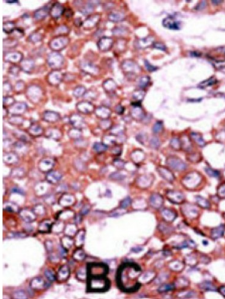


M-Phase Inducer Phosphatase 1 Phospho-Ser75 (CDC25A pS75) Antibody

Catalogue No.: abx031842



CDC25A is a member of the CDC25 family of phosphatases. CDC25A is required for progression from G1 to the S phase of the cell cycle. It activates the cyclin-dependent kinase CDC2 by removing two phosphate groups. CDC25A is specifically degraded in response to DNA damage, which prevents cells with chromosomal abnormalities from progressing through cell division. CDC25A is an oncogene, although its exact role in oncogenesis has not been demonstrated. Two transcript variants encoding different isoforms have been found for this gene.

Target: M-Phase Inducer Phosphatase 1 Phospho-Ser75 (CDC25A pS75)

Clonality: Polyclonal

Target Modification: Ser75

Modification: Phosphorylation

Reactivity: Human

Tested Applications: ELISA, WB, IHC

Host: Rabbit

Recommended dilutions: WB: 1/1000, IHC-P: 1/50 - 1/100. Not tested in IHC-F. Optimal dilutions/concentrations should be determined by the end user.

Conjugation: Unconjugated

Datasheet

Version: 2.0.0
Revision date: 24 Apr 2025



Immunogen:	KLH-conjugated synthetic phosphopeptide corresponding to amino acid residues surrounding S75 of human CDC25A.
Isotype:	IgG
Form:	Liquid
Purification:	Purified by protein G affinity chromatography. Then, the antibody fraction was peptide affinity purified in a 2-step procedure with control and phosphorylated peptides. The phospho-specific antibody was eluted with high and low pH buffers and neutralized immediately, followed by dialysis against PBS.
Storage:	Aliquot and store at -20°C. Avoid repeated freeze/thaw cycles.
UniProt Primary AC:	P30304 (UniProt , ExpASY)
KEGG:	hsa:993
String:	9606.ENSP00000303706
Molecular Weight:	Calculated MW: 59.1 kDa
Buffer:	PBS containing 0.09% sodium azide.
Note:	THIS PRODUCT IS FOR RESEARCH USE ONLY. NOT FOR USE IN DIAGNOSTIC, THERAPEUTIC OR COSMETIC PROCEDURES. NOT FOR HUMAN OR ANIMAL CONSUMPTION.

For Reference Only