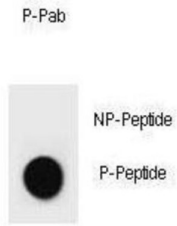
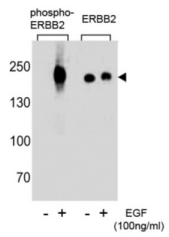
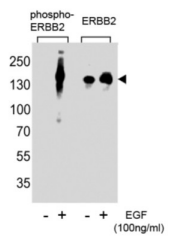


# ErbB2 (pY1248) Antibody

Catalogue No.: abx031859



## Dot Blot



ErbB2 is a member of the epidermal growth factor (EGF) receptor family of receptor tyrosine kinases. This protein has no ligand binding domain of its own and therefore cannot bind growth factors. However, it does bind tightly to other ligand-bound EGF receptor family members to form a heterodimer, stabilizing ligand binding and enhancing kinase-mediated activation of downstream signalling pathways, such as those involving mitogen-activated protein kinase and phosphatidylinositol-3 kinase. Amplification and/or overexpression of this gene has been reported in numerous cancers, including breast and ovarian tumors.

**Target:** ErbB2 (pY1248)

**Clonality:** Polyclonal

**Target Modification:** Tyr1248

**Modification:** Phosphorylation

**Reactivity:** Human

# Datasheet

Version: 4.0.0  
Revision date: 04 Dec 2024



<b>Tested Applications:</b>	ELISA, WB, DB
<b>Host:</b>	Rabbit
<b>Recommended dilutions:</b>	WB: 1/8000, DB: 1/500. Optimal dilutions/concentrations should be determined by the end user.
<b>Conjugation:</b>	Unconjugated
<b>Immunogen:</b>	KLH-conjugated synthetic phosphopeptide corresponding to amino acid residues surrounding Y1248 of human ErbB2.
<b>Isotype:</b>	IgG
<b>Form:</b>	Liquid
<b>Purification:</b>	Purified by protein G affinity chromatography. Then, the antibody fraction was peptide affinity purified in a 2-step procedure with control and phosphorylated peptides. The phospho-specific antibody was eluted with high and low pH buffers and neutralized immediately, followed by dialysis against PBS.
<b>Storage:</b>	Aliquot and store at -20°C. Avoid repeated freeze/thaw cycles.
<b>UniProt Primary AC:</b>	P04626 ( <a href="#">UniProt</a> , <a href="#">ExPASy</a> )
<b>NCBI Accession:</b>	NP_001005862.1, NP_004439.2
<b>KEGG:</b>	hsa:2064
<b>String:</b>	<a href="#">9606.ENSP00000269571</a>
<b>Molecular Weight:</b>	Calculated MW: 138 kDa
<b>Buffer:</b>	PBS containing 0.09% sodium azide.
<b>Note:</b>	This product is for research use only.