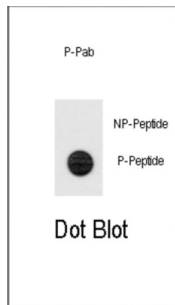


TERT (pS1125) Antibody

Catalogue No.: abx032025



Telomerase is a ribonucleoprotein polymerase that maintains telomere ends by addition of the telomere repeat TTAGGG. The enzyme consists of a protein component with reverse transcriptase activity, and an RNA component which serves as a template for the telomere repeat. Telomerase expression plays a role in cellular senescence, as it is normally repressed in postnatal somatic cells resulting in progressive shortening of telomeres. Deregulation of telomerase expression in somatic cells may be involved in oncogenesis. Studies in mouse suggest that telomerase also participates in chromosomal repair, since de novo synthesis of telomere repeats may occur at double-stranded breaks.

Target:	TERT (pS1125)
Clonality:	Polyclonal
Target Modification:	Ser1125
Modification:	Phosphorylation
Reactivity:	Human
Tested Applications:	ELISA, DB
Host:	Rabbit
Recommended dilutions:	DB: 1/500. Optimal dilutions/concentrations should be determined by the end user.
Conjugation:	Unconjugated
Immunogen:	KLH-conjugated synthetic phosphopeptide corresponding to amino acid residues surrounding S1125 of human TERT.
Isotype:	IgG
Form:	Liquid
Purification:	Purified through a protein A column, followed by two-step phosphospecific peptide affinity purification.

Datasheet

Version: 1.0.0
Revision date: 22 Dec 2024



Storage: Aliquot and store at -20°C. Avoid repeated freeze/thaw cycles.

UniProt Primary AC: O14746 ([UniProt](#), [ExPASy](#))

Gene Symbol: TERT

GeneID: [7015](#)

OMIM: [178500](#)

NCBI Accession: NP_001180305.1, NM_001193376.1

HGNC: 11730

KEGG: hsa:7015

Ensembl: ENSG00000164362

String: [9606.ENSP00000309572](#)

Molecular Weight: Calculated MW: 127 kDa

Buffer: PBS containing 0.09% sodium azide.

Note: This product is for research use only.

For Reference Only