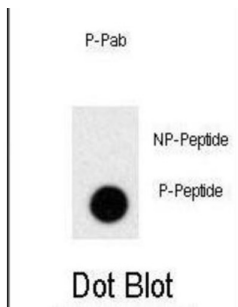


Prolactin (pS163) Antibody

Catalogue No.: abx032035



Prolactin (Prolactin) acts primarily on the mammary gland by promoting lactation.

Target:	Prolactin (pS163)
Clonality:	Polyclonal
Target Modification:	Ser163
Modification:	Phosphorylation
Reactivity:	Human
Tested Applications:	ELISA, DB
Host:	Rabbit
Recommended dilutions:	DB: 1/500. Optimal dilutions/concentrations should be determined by the end user.
Conjugation:	Unconjugated
Immunogen:	KLH-conjugated synthetic phosphopeptide corresponding to amino acid residues surrounding S163 of human PRL.
Isotype:	IgG
Form:	Liquid
Purification:	Purified through a protein A column, followed by two-step phosphospecific peptide affinity purification.
Storage:	Aliquot and store at -20°C. Avoid repeated freeze/thaw cycles.
UniProt Primary AC:	P01236 (UniProt , ExpASY)

Datasheet

Version: 1.0.0
Revision date: 23 Dec 2024



KEGG: hsa:5617

String: [9606.ENSP00000302150](#)

Molecular Weight: Calculated MW: 25.9 kDa

Buffer: PBS containing 0.09% sodium azide.

Note: This product is for research use only.

For Reference Only