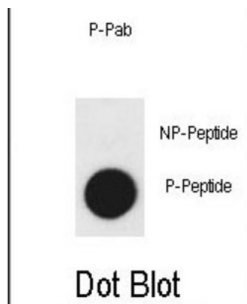


KDR (pY1175) Antibody

Catalogue No.: abx032082



Vascular endothelial growth factor (VEGF) is a major growth factor for endothelial cells. This gene encodes one of the two receptors of the VEGF. This receptor, known as kinase insert domain receptor, is a type III receptor tyrosine kinase. It functions as the main mediator of VEGF-induced endothelial proliferation, survival, migration, tubular morphogenesis and sprouting. The signalling and trafficking of this receptor are regulated by multiple factors, including Rab GTPase, P2Y purine nucleotide receptor, integrin α V β 3, T-cell protein tyrosine phosphatase, etc.

Target: KDR (pY1175)**Clonality:** Polyclonal**Target Modification:** Tyr1175**Modification:** Phosphorylation**Reactivity:** Human**Tested Applications:** ELISA, DB**Host:** Rabbit**Recommended dilutions:** DB: 1/500. Optimal dilutions/concentrations should be determined by the end user.**Conjugation:** Unconjugated**Immunogen:** KLH-conjugated synthetic phosphopeptide corresponding to amino acid residues surrounding Y1175 of human KDR.**Isotype:** IgG**Form:** Liquid**Purification:** Purified through a protein A column, followed by two-step phosphospecific peptide affinity purification.

Datasheet

Version: 1.0.0
Revision date: 13 Mar 2025



Storage: Aliquot and store at -20°C. Avoid repeated freeze/thaw cycles.

UniProt Primary AC: P35968 ([UniProt](#), [ExpASY](#))

KEGG: hsa:3791

String: [9606.ENSP00000263923](#)

Molecular Weight: Calculated MW: 152 kDa

Buffer: PBS containing 0.09% sodium azide.

Note: THIS PRODUCT IS FOR RESEARCH USE ONLY. NOT FOR USE IN DIAGNOSTIC, THERAPEUTIC OR COSMETIC PROCEDURES. NOT FOR HUMAN OR ANIMAL CONSUMPTION.

For Reference Only