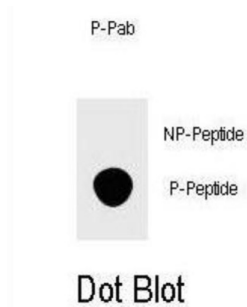


FOXP3 (pS418) Antibody

Catalogue No.: abx032090



The protein is a member of the forkhead/winged-helix family of transcriptional regulators. Defects in this gene are the cause of immunodeficiency polyendocrinopathy, enteropathy, X-linked syndrome (IPEX), also known as X-linked autoimmunity-immunodeficiency syndrome.

Target:	FOXP3 (pS418)
Clonality:	Polyclonal
Target Modification:	Ser418
Modification:	Phosphorylation
Reactivity:	Human
Tested Applications:	ELISA, DB
Host:	Rabbit
Recommended dilutions:	DB: 1/500. Optimal dilutions/concentrations should be determined by the end user.
Conjugation:	Unconjugated
Immunogen:	KLH-conjugated synthetic phosphopeptide corresponding to amino acid residues surrounding S418 of human FOXP3.
Isotype:	IgG
Form:	Liquid
Purification:	Purified through a protein A column, followed by two-step phosphospecific peptide affinity purification.
Storage:	Aliquot and store at -20°C. Avoid repeated freeze/thaw cycles.

Datasheet

Version: 2.0.0
Revision date: 15 Jan 2025



UniProt Primary AC: Q9BZS1 ([UniProt](#), [ExPASy](#))

String: [9606.ENSP00000365380](#)

Molecular Weight: Calculated MW: 47.2 kDa

Buffer: PBS containing 0.09% sodium azide.

Specificity: Predicted to react with Monkey FOXP3.

Note: This product is for research use only.

For Reference Only