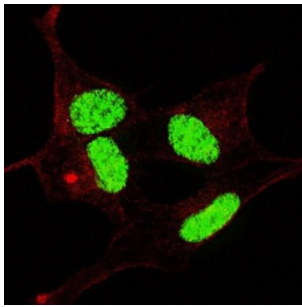
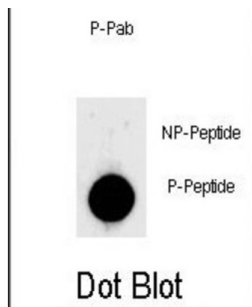


LIN28 (pS134) Antibody

Catalogue No.: abx032091



LIN28 is probable transcription factor. It plays a critical role in the control of immune response.

Target:	LIN28 (pS134)
Clonality:	Polyclonal
Target Modification:	Ser134
Modification:	Phosphorylation
Reactivity:	Human
Tested Applications:	ELISA, IF/ICC, DB
Host:	Rabbit

Recommended dilutions: IF/ICC: 1/100, DB: 1/500. Optimal dilutions/concentrations should be determined by the end user.

Conjugation: Unconjugated

Immunogen: KLH-conjugated synthetic phosphopeptide corresponding to amino acid residues surrounding S134 of human LIN28.

Isotype: IgG

Datasheet

Version: 1.0.0
Revision date: 02 Apr 2025



Form:	Liquid
Purification:	Purified through a protein A column, followed by two-step phosphospecific peptide affinity purification.
Storage:	Aliquot and store at -20°C. Avoid repeated freeze/thaw cycles.
UniProt Primary AC:	Q9H9Z2 (UniProt , ExPASy)
String:	9606.ENSP00000363314
Molecular Weight:	Calculated MW: 22.7 kDa
Buffer:	PBS containing 0.09% sodium azide.
Note:	THIS PRODUCT IS FOR RESEARCH USE ONLY. NOT FOR USE IN DIAGNOSTIC, THERAPEUTIC OR COSMETIC PROCEDURES. NOT FOR HUMAN OR ANIMAL CONSUMPTION.

For Reference Only