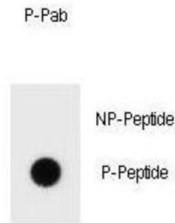
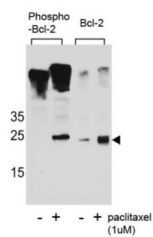


bcl-2 (pS70) Antibody

Catalogue No.: abx032200

**Dot Blot**

This gene encodes an integral outer mitochondrial membrane protein that blocks the apoptotic death of some cells such as lymphocytes. Constitutive expression of BCL2, such as in the case of translocation of BCL2 to Ig heavy chain locus, is thought to be the cause of follicular lymphoma. Two transcript variants, produced by alternate splicing, differ in their C-terminal ends. [provided by RefSeq].

Target: bcl-2 (pS70)**Clonality:** Polyclonal**Target Modification:** Ser70**Modification:** Phosphorylation**Reactivity:** Human**Tested Applications:** ELISA, WB, DB**Host:** Rabbit**Recommended dilutions:** WB: 1/1000, DB: 1/500. Optimal dilutions/concentrations should be determined by the end user.**Conjugation:** Unconjugated**Immunogen:** KLH-conjugated synthetic phosphopeptide corresponding to amino acid residues surrounding S70 of human bcl-2.

Datasheet

Version: 1.0.0
Revision date: 03 Dec 2024



Isotype:	IgG
Form:	Liquid
Purification:	Purified through a protein A column, followed by two-step phosphospecific peptide affinity purification.
Storage:	Aliquot and store at -20°C. Avoid repeated freeze/thaw cycles.
UniProt Primary AC:	P10415 (UniProt , ExPASy)
NCBI Accession:	NP_000624.2
KEGG:	hsa:596
String:	9606.ENSP00000381185
Molecular Weight:	Calculated MW: 26.3 kDa
Buffer:	PBS containing 0.09% sodium azide.
Note:	This product is for research use only.

For Reference Only