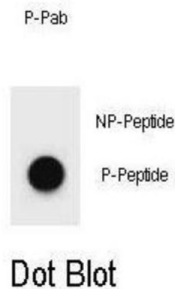


MAP1LC3A (pS12) Antibody

Catalogue No.: abx032254



MAP1A and MAP1B are microtubule-associated proteins which mediate the physical interactions between microtubules and components of the cytoskeleton. MAP1A and MAP1B each consist of a heavy chain subunit and multiple light chain subunits. The protein encoded by this gene is one of the light chain subunits and can associate with either MAP1A or MAP1B. Two transcript variants encoding different isoforms have been found for this gene.

Target:	MAP1LC3A (pS12)
Clonality:	Polyclonal
Target Modification:	Ser12
Modification:	Phosphorylation
Reactivity:	Human
Tested Applications:	ELISA, DB
Host:	Rabbit
Recommended dilutions:	DB: 1/500. Optimal dilutions/concentrations should be determined by the end user.
Conjugation:	Unconjugated
Immunogen:	KLH-conjugated synthetic phosphopeptide corresponding to amino acid residues surrounding S12 of human MAP1LC3A.
Isotype:	IgG
Form:	Liquid
Purification:	Purified through a protein A column, followed by two-step phosphospecific peptide affinity purification.
Storage:	Aliquot and store at -20°C. Avoid repeated freeze/thaw cycles.

Datasheet

Version: 1.0.0

Revision date: 26 Mar 2025



UniProt Primary AC: Q9H492 ([UniProt](#), [ExpASy](#))

String: [9606.ENSP00000363970](#)

Buffer: PBS containing 0.09% sodium azide.

Specificity: Predicted to react with Mouse, Rat, Cow and Zebrafish MAP1LC3A pS12.

Note: THIS PRODUCT IS FOR RESEARCH USE ONLY. NOT FOR USE IN DIAGNOSTIC, THERAPEUTIC OR COSMETIC PROCEDURES. NOT FOR HUMAN OR ANIMAL CONSUMPTION.

For Reference Only