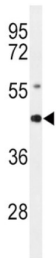
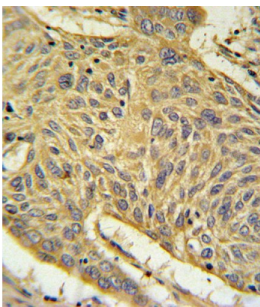
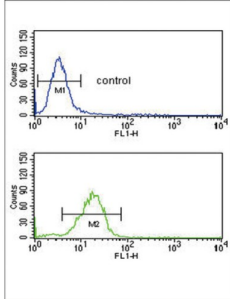


Advanced Glycosylation End Product-Specific Receptor (AGER) Antibody

Catalogue No.: abx032323



AGER encodes a member of the immunoglobulin superfamily of cell surface molecules. It is a receptor for various molecules, including the amyloidogenic form of serum amyloid A, amyloid-beta protein, members of the S100/calgranulin superfamily and advanced glycation end products. The gene lies within the major histocompatibility complex (MHC) class III region on chromosome 6.

Target: Advanced Glycosylation End Product-Specific Receptor (AGER)

Clonality: Polyclonal

Reactivity: Human, Mouse

Tested Applications: ELISA, WB, IHC, FCM

Host: Rabbit

Datasheet

Version: 3.0.0
Revision date: 03 Dec 2024



Recommended dilutions:	WB: 1/1000, IHC-P: 1/10 - 1/50, FCM: 1/10 - 1/50. Not tested in IHC-F. Optimal dilutions/concentrations should be determined by the end user.
Conjugation:	Unconjugated
Immunogen:	KLH-conjugated synthetic peptide between 24-52 amino acids from the N-terminal region of human AGER.
Isotype:	IgG
Form:	Liquid
Purification:	Purified through a protein A column, followed by peptide affinity purification.
Storage:	Aliquot and store at -20°C. Avoid repeated freeze/thaw cycles.
UniProt Primary AC:	Q15109 (UniProt , ExPASy)
KEGG:	hsa:177
String:	9606.ENSP00000364210
Molecular Weight:	Calculated MW: 42.8 kDa
Buffer:	PBS containing 0.09% sodium azide.
Note:	This product is for research use only.

For Reference Only