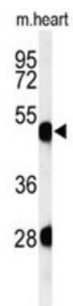
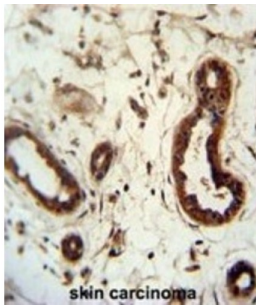


## Keratin, Type II Cuticular Hb2 (KRT82) Antibody

Catalogue No.: abx032393



KRT82 is a member of the keratin gene family. As a type II hair keratin, it is a basic protein which heterodimerizes with type I keratins to form hair and nails. The type II hair keratins are clustered in a region of chromosome 12q13 and are grouped into two distinct subfamilies based on structure similarity. One subfamily, consisting of KRTHB1, KRTHB3, and KRTHB6, is highly related. The other less-related subfamily includes KRTHB2, KRTHB4, and KRTHB5. All hair keratins are expressed in the hair follicle; this keratin appears to be a hair cuticle-specific keratin.

**Target:** Keratin, Type II Cuticular Hb2 (KRT82)

**Clonality:** Polyclonal

**Reactivity:** Human, Mouse

**Tested Applications:** ELISA, WB, IHC

**Host:** Rabbit

**Recommended dilutions:** WB: 1/1000, IHC-P: 1/50 - 1/100. Not tested in IHC-F. Optimal dilutions/concentrations should be determined by the end user.

**Conjugation:** Unconjugated

**Immunogen:** KLH-conjugated synthetic peptide between 312-341 amino acids from the Central region of human KRT82.

**Isotype:** IgG

# Datasheet

Version: 3.0.0  
Revision date: 23 Feb 2025



<b>Form:</b>	Liquid
<b>Purification:</b>	Purified through a protein A column, followed by peptide affinity purification.
<b>Storage:</b>	Aliquot and store at -20°C. Avoid repeated freeze/thaw cycles.
<b>UniProt Primary AC:</b>	Q9NSB4 ( <a href="#">UniProt</a> , <a href="#">ExPASy</a> )
<b>Gene Symbol:</b>	KRT82
<b>GeneID:</b>	<a href="#">3888</a>
<b>KEGG:</b>	hsa:3888
<b>Ensembl:</b>	ENSG00000161850
<b>String:</b>	<a href="#">9606.ENSP00000257974</a>
<b>Molecular Weight:</b>	Calculated MW: 56.7 kDa
<b>Buffer:</b>	PBS containing 0.09% sodium azide.
<b>Note:</b>	This product is for research use only.

For Reference Only