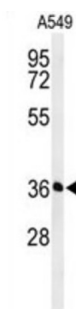
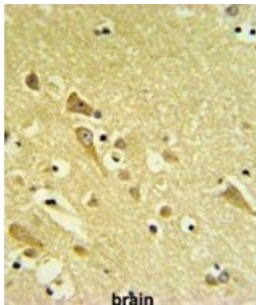


Proteasomal ATPase-Associated Factor 1 (PAAF1) Antibody

Catalogue No.: abx032396



PAAF1 inhibits proteasome 26S assembly and proteolytic activity by impairing the association of the 19S regulatory complex with the 20S core. In case of HIV-1 infection, recruited by viral Tat to the HIV-1 promoter, where it promotes the recruitment of 19S regulatory complex through dissociation of the proteasome 26S. This presumably promotes provirus transcription efficiency.

Target: Proteasomal ATPase-Associated Factor 1 (PAAF1)

Clonality: Polyclonal

Reactivity: Human

Tested Applications: ELISA, WB, IHC

Host: Rabbit

Recommended dilutions: WB: 1/1000, IHC-P: 1/50 - 1/100. Not tested in IHC-F. Optimal dilutions/concentrations should be determined by the end user.

Conjugation: Unconjugated

Immunogen: KLH-conjugated synthetic peptide between 109-138 amino acids from the N-terminal region of human PAAF1.

Isotype: IgG

Form: Liquid

Datasheet

Version: 3.0.0
Revision date: 23 Dec 2024



Purification:	Purified through a protein A column, followed by peptide affinity purification.
Storage:	Aliquot and store at -20°C. Avoid repeated freeze/thaw cycles.
UniProt Primary AC:	Q9BRP4 (UniProt , ExPASy)
Gene Symbol:	PAAF1
String:	9606.ENSP00000311665
Molecular Weight:	Calculated MW: 42.2 kDa
Buffer:	PBS containing 0.09% sodium azide.
Specificity:	Predicted to react with Cow PAAF1.
Note:	This product is for research use only.

For Reference Only