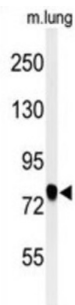


## Semaphorin 3C (SEMA3C) Antibody

Catalogue No.: abx032401



SEMA3C may be involved in diverse cell survival mechanisms.

**Target:** Semaphorin 3C (SEMA3C)

**Clonality:** Polyclonal

**Reactivity:** Human, Mouse

**Tested Applications:** ELISA, WB

**Host:** Rabbit

**Recommended dilutions:** WB: 1/1000. Optimal dilutions/concentrations should be determined by the end user.

**Conjugation:** Unconjugated

**Immunogen:** KLH-conjugated synthetic peptide between 592-620 amino acids from the C-terminal region of human SEMA3C.

**Isotype:** IgG

**Form:** Liquid

**Purification:** Purified through a protein A column, followed by peptide affinity purification.

**Storage:** Aliquot and store at -20°C. Avoid repeated freeze/thaw cycles.

**UniProt Primary AC:** Q99985 ([UniProt](#), [ExpASY](#))

**Gene Symbol:** SEMA3C

**KEGG:** hsa:10512

# Datasheet

Version: 2.0.0

Revision date: 03 Feb 2025



**String:** [9606.ENSF00000265361](#)

**Molecular Weight:** Calculated MW: 85.2 kDa

**Buffer:** PBS containing 0.09% sodium azide.

**Specificity:** Predicted to react with Cow SEMA3C.

**Note:** This product is for research use only.

For Reference Only