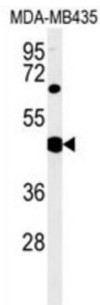


SH2 Domain Containing 2A (SH2D2A) Antibody

Catalogue No.: abx032479



This protein encodes an adaptor protein thought to function in T-cell signal transduction. A related protein in mouse is responsible for the activation of lymphocyte-specific protein-tyrosine kinase and functions in downstream signaling. Alternative splicing results in multiple transcript variants.

Target:	SH2 Domain Containing 2A (SH2D2A)
Clonality:	Polyclonal
Reactivity:	Human
Tested Applications:	ELISA, WB
Host:	Rabbit
Recommended dilutions:	WB: 1/1000. Optimal dilutions/concentrations should be determined by the end user.
Conjugation:	Unconjugated
Immunogen:	KLH-conjugated synthetic peptide between 86-112 amino acids from the Central region of human SH2D2A.
Isotype:	IgG
Form:	Liquid
Purification:	Purified through a protein A column, followed by peptide affinity purification.
Storage:	Aliquot and store at -20°C. Avoid repeated freeze/thaw cycles.
UniProt Primary AC:	Q9NP31 (UniProt , ExPASy)
Gene Symbol:	SH2D2A

Datasheet

Version: 1.0.0

Revision date: 06 Oct 2024



String: [9606.ENSF00000376123](#)

Molecular Weight: Calculated MW: 42.9 kDa

Buffer: PBS containing 0.09% sodium azide.

Note: This product is for research use only.

For Reference Only