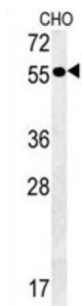
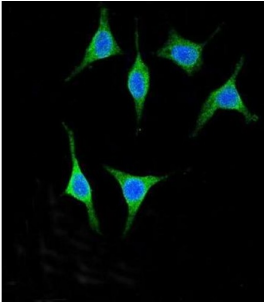


Pancreatic Alpha-Amylase (AMY2A) Antibody

Catalogue No.: abx032511



Amylases are secreted proteins that hydrolyze 1, 4-alpha-glucoside bonds in oligosaccharides and polysaccharides, and thus catalyze the first step in digestion of dietary starch and glycogen. The human genome has a cluster of several amylase genes that are expressed at high levels in either salivary gland or pancreas. This gene encodes an amylase isoenzyme produced by the pancreas.

Target: Pancreatic Alpha-Amylase (AMY2A)

Clonality: Polyclonal

Reactivity: Human, Mouse

Tested Applications: ELISA, WB, IF/ICC

Host: Rabbit

Recommended dilutions: WB: 1/1000, IF/ICC: 1/10 - 1/50. Optimal dilutions/concentrations should be determined by the end user.

Conjugation: Unconjugated

Immunogen: KLH-conjugated synthetic peptide between 484-511 amino acids from the C-terminal region of human AMY2A.

Isotype: IgG

Datasheet

Version: 2.0.0
Revision date: 17 Oct 2024



Form:	Liquid
Purification:	Purified through a protein A column, followed by peptide affinity purification.
Storage:	Aliquot and store at -20°C. Avoid repeated freeze/thaw cycles.
UniProt Primary AC:	P04746 (UniProt , ExPASy)
KEGG:	hsa:279
String:	9606.ENSP00000481450
Molecular Weight:	Calculated MW: 57.7 kDa
Buffer:	PBS containing 0.09% sodium azide.
Specificity:	Predicted to react with Pig AMY2A.
Note:	This product is for research use only.

For Reference Only