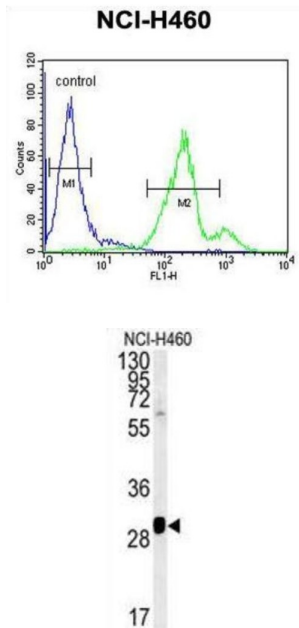


SC31B Antibody

Catalogue No.: abx032570



This gene encodes a protein of unknown function. The protein has moderate similarity to rat VAP1 protein which is an endosomal membrane-associated protein, containing a putative Ca²⁺/calmodulin-dependent kinase II phosphorylation site.

Target: SC31B

Clonality: Polyclonal

Reactivity: Human

Tested Applications: ELISA, WB, FCM

Host: Rabbit

Recommended dilutions: WB: 1/1000, FCM: 1/10 - 1/50. Optimal dilutions/concentrations should be determined by the end user.

Conjugation: Unconjugated

Immunogen: KLH-conjugated synthetic peptide between 1076-1104 amino acids from the C-terminal region of human SC31B.

Isotype: IgG

Form: Liquid

Datasheet

Version: 2.0.0
Revision date: 22 Nov 2024



Purification: Purified through a protein A column, followed by peptide affinity purification.

Storage: Aliquot and store at -20°C. Avoid repeated freeze/thaw cycles.

UniProt Primary AC: Q9NQW1 ([UniProt](#), [ExPASy](#))

Gene Symbol: SEC31B

String: [9606.ENSP00000359370](#)

Molecular Weight: Calculated MW: 129 kDa

Buffer: PBS containing 0.09% sodium azide.

Note: This product is for research use only.

For Reference Only