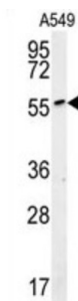


## Putative Dol-P-Glc:Glc(2)Man(9)GlcNAc(2)-PP-Dol Alpha-1,2-Glucosyltransferase (ALG10B) Antibody

Catalogue No.: abx032574



Putative alpha-1, 2-glucosyltransferase, which adds the third glucose residue to the lipid-linked oligosaccharide precursor for N-linked glycosylation. Transfers glucose from dolichyl phosphate glucose (Dol-P-Glc) onto the lipid-linked oligosaccharide Glc (2) Man (9) GlcNAc (2) PP-Dol. When coupled to KCNH2 may reduce KCNH2 sensitivity to classic proarrhythmic drug blockade, possibly by mediating glycosylation of KCNH2.

**Target:** Putative Dol-P-Glc:Glc(2)Man(9)GlcNAc(2)-PP-Dol Alpha-1,2-Glucosyltransferase (ALG10B)

**Clonality:** Polyclonal

**Reactivity:** Human

**Tested Applications:** ELISA, WB

**Host:** Rabbit

**Recommended dilutions:** WB: 1/1000. Optimal dilutions/concentrations should be determined by the end user.

**Conjugation:** Unconjugated

**Immunogen:** KLH-conjugated synthetic peptide between 324-353 amino acids from the C-terminal region of human ALG10B.

**Isotype:** IgG

**Form:** Liquid

**Purification:** Purified through a protein A column, followed by peptide affinity purification.

**Storage:** Aliquot and store at -20°C. Avoid repeated freeze/thaw cycles.

**UniProt Primary AC:** Q5I7T1 ([UniProt](#), [ExPASy](#))

# Datasheet

Version: 2.0.0  
Revision date: 15 Nov 2024



**KEGG:** hsa:144245

**String:** [9606.ENSP00000310120](#)

**Molecular Weight:** Calculated MW: 55.4 kDa

**Buffer:** PBS containing 0.09% sodium azide.

**Note:** This product is for research use only.

For Reference Only