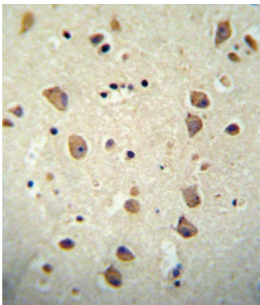


Datasheet

Version: 2.0.0
Revision date: 12 Mar 2025

Contactin 2 (CNTN2) Antibody

Catalogue No.: abx032636



CNTN2 Antibody is a Rabbit Polyclonal antibody against CNTN2.

Target:	Contactin 2 (CNTN2)
Clonality:	Polyclonal
Reactivity:	Human, Mouse
Tested Applications:	ELISA, WB, IHC
Host:	Rabbit
Recommended dilutions:	WB: 1/1000, IHC-P: 1/10 - 1/50. Not tested in IHC-F. Optimal dilutions/concentrations should be determined by the end user.
Conjugation:	Unconjugated
Immunogen:	KLH-conjugated synthetic peptide between 293-321 amino acids from the Central region of human CNTN2.
Isotype:	IgG
Form:	Liquid
Purification:	Purified through a protein A column, followed by peptide affinity purification.

Datasheet

Version: 2.0.0
Revision date: 12 Mar 2025



Storage: Aliquot and store at -20°C. Avoid repeated freeze/thaw cycles.

UniProt Primary AC: Q02246 ([UniProt](#), [ExPASy](#))

KEGG: hsa:6900

String: [9606.ENSP00000330633](#)

Molecular Weight: Calculated MW: 113 kDa

Buffer: PBS containing 0.09% sodium azide.

Specificity: Predicted to react with Rat CNTN2.

Note: THIS PRODUCT IS FOR RESEARCH USE ONLY. NOT FOR USE IN DIAGNOSTIC, THERAPEUTIC OR COSMETIC PROCEDURES. NOT FOR HUMAN OR ANIMAL CONSUMPTION.

For Reference Only