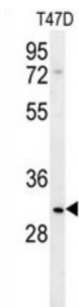


Leucine Rich Repeat Containing 52 (LRRC52) Antibody

Catalogue No.: abx032643



LRRC52 Antibody is a Rabbit Polyclonal antibody against LRRC52.

Target:	Leucine Rich Repeat Containing 52 (LRRC52)
Clonality:	Polyclonal
Reactivity:	Human
Tested Applications:	ELISA, WB
Host:	Rabbit
Recommended dilutions:	WB: 1/1000. Optimal dilutions/concentrations should be determined by the end user.
Conjugation:	Unconjugated
Immunogen:	KLH-conjugated synthetic peptide between 267-296 amino acids from the C-terminal region of human LRRC52.
Isotype:	IgG
Form:	Liquid
Purification:	Purified through a protein A column, followed by peptide affinity purification.
Storage:	Aliquot and store at -20°C. Avoid repeated freeze/thaw cycles.
UniProt Primary AC:	Q8N7C0 (UniProt , ExPASy)
Gene Symbol:	LRRC52
KEGG:	hsa:440699

Datasheet

Version: 1.0.0

Revision date: 18 Oct 2024



String: [9606.ENSF00000294818](#)

Molecular Weight: Calculated MW: 35.1 kDa

Buffer: PBS containing 0.09% sodium azide.

Note: This product is for research use only.

For Reference Only