

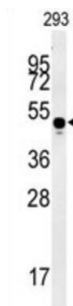
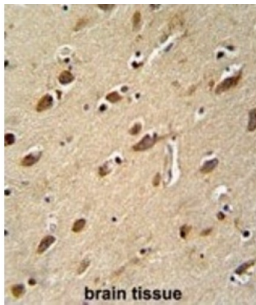
Datasheet

Version: 4.0.0
Revision date: 13 Mar 2025



Myosin Light Chain Kinase 4 (MYLK4) Antibody

Catalogue No.: abx032677



MYLK4 Antibody is a Rabbit Polyclonal antibody against MYLK4.

Target:	Myosin Light Chain Kinase 4 (MYLK4)
Clonality:	Polyclonal
Reactivity:	Human
Tested Applications:	ELISA, WB, IHC
Host:	Rabbit
Recommended dilutions:	WB: 1/1000, IHC-P: 1/50 - 1/100. Not tested in IHC-F. Optimal dilutions/concentrations should be determined by the end user.
Conjugation:	Unconjugated
Immunogen:	KLH-conjugated synthetic peptide between 286-314 amino acids from the C-terminal region of human MYLK4.
Isotype:	IgG
Form:	Liquid
Purification:	Purified through a protein A column, followed by peptide affinity purification.

Datasheet

Version: 4.0.0
Revision date: 13 Mar 2025



Storage: Aliquot and store at -20°C. Avoid repeated freeze/thaw cycles.

UniProt Primary AC: Q86YV6 ([UniProt](#), [ExpASY](#))

Gene Symbol: MYLK4

KEGG: hsa:340156

String: [9606.ENSP00000274643](#)

Molecular Weight: Calculated MW: 44.5 kDa

Buffer: PBS containing 0.09% sodium azide.

Note: THIS PRODUCT IS FOR RESEARCH USE ONLY. NOT FOR USE IN DIAGNOSTIC, THERAPEUTIC OR COSMETIC PROCEDURES. NOT FOR HUMAN OR ANIMAL CONSUMPTION.

For Reference Only