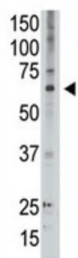
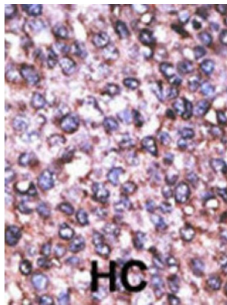


Melanoma-Associated Antigen D2 (MAGED2) Antibody

Catalogue No.: abx032711



MAGED2 is a member of the MAGED gene family. In contrast to the MAGEA and MAGEB genes, which have their entire coding sequences located in the last exon, the MAGED genes have their coding sequences located throughout multiple exons. Also, the MAGEA and MAGEB genes are silent in normal tissues with the exception of testis and placenta, whereas the MAGED genes are expressed ubiquitously. The MAGED genes are clustered on chromosome Xp11. This gene is located in Xp11.2, a hot spot for X-linked mental retardation (XLMR).

Target: Melanoma-Associated Antigen D2 (MAGED2)

Clonality: Polyclonal

Reactivity: Human

Tested Applications: ELISA, WB, IHC

Host: Rabbit

Recommended dilutions: WB: 1/1000, IHC-P: 1/50 - 1/100. Not tested in IHC-F. Optimal dilutions/concentrations should be determined by the end user.

Conjugation: Unconjugated

Immunogen: KLH-conjugated synthetic peptide between 576-606 amino acids from the C-terminal region of human MAGED2.

Isotype: IgG

Datasheet

Version: 2.0.0

Revision date: 06 Mar 2025



Form:	Liquid
Purification:	Purified through a protein G column, eluted with high and low pH buffers and neutralized immediately, followed by dialysis against PBS.
Storage:	Aliquot and store at -20°C. Avoid repeated freeze/thaw cycles.
UniProt Primary AC:	Q9UNF1 (UniProt , ExPASy)
String:	9606.ENSP00000364209
Molecular Weight:	Calculated MW: 65 kDa
Buffer:	PBS containing 0.09% sodium azide.
Note:	THIS PRODUCT IS FOR RESEARCH USE ONLY. NOT FOR USE IN DIAGNOSTIC, THERAPEUTIC OR COSMETIC PROCEDURES. NOT FOR HUMAN OR ANIMAL CONSUMPTION.

For Reference Only