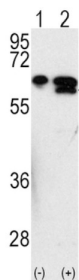
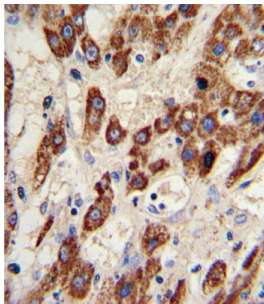
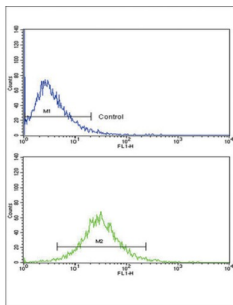


Matrix Metalloproteinase 3 / Stromelysin-1 (MMP3) Antibody

Catalogue No.: abx032732



Proteins of the matrix metalloproteinase (MMP) family are involved in the breakdown of extracellular matrix in normal physiological processes, such as embryonic development, reproduction, and tissue remodeling, as well as in disease processes, such as arthritis and metastasis. Most MMPs are secreted as inactive proproteins which are activated when cleaved by extracellular proteinases. MMP3 is an enzyme which degrades fibronectin, laminin, collagens III, IV, IX, and X, and cartilage proteoglycans. The enzyme is thought to be involved in wound repair, progression of atherosclerosis, and tumor initiation.

Target:	Matrix Metalloproteinase 3 / Stromelysin-1 (MMP3)
Clonality:	Polyclonal
Reactivity:	Human
Tested Applications:	ELISA, WB, IHC, FCM
Host:	Rabbit

Datasheet

Version: 2.0.0

Revision date: 01 Sep 2024



Recommended dilutions:	WB: 1/1000, IHC-P: 1/10 - 1/50, FCM: 1/10 - 1/50. Not tested in IHC-F. Optimal dilutions/concentrations should be determined by the end user.
Conjugation:	Unconjugated
Immunogen:	KLH-conjugated synthetic peptide between 298-327 amino acids from the Central region of human MMP3.
Isotype:	IgG
Form:	Liquid
Purification:	Purified through a protein G column, eluted with high and low pH buffers and neutralized immediately, followed by dialysis against PBS.
Storage:	Aliquot and store at -20°C. Avoid repeated freeze/thaw cycles.
UniProt Primary AC:	P08254 (UniProt , ExPASy)
KEGG:	hsa:4314
String:	9606.ENSP00000299855
Enzyme Commission Number:	EC 3.4.24.17, EC 3.4.24
Molecular Weight:	Calculated MW: 54 kDa
Buffer:	PBS containing 0.09% sodium azide.
Note:	This product is for research use only.