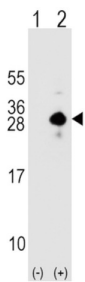
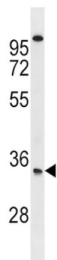
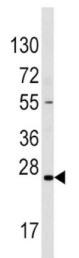


Sclerostin (SOST) Antibody

Catalogue No.: abx032756



Sclerostin is a secreted glycoprotein with a C-terminal cysteine knot-like (CTCK) domain and sequence similarity to the DAN (differential screening-selected gene aberrative in neuroblastoma) family of bone morphogenetic protein (BMP) antagonists. Loss-of-function mutations in this gene are associated with an autosomal-recessive disorder, sclerosteosis, which causes progressive bone overgrowth. A deletion downstream of this gene, which causes reduced sclerostin expression, is associated with a milder form of the disorder called van Buchem disease.

Target: Sclerostin (SOST)

Clonality: Polyclonal

Reactivity: Human, Mouse, Rat

Tested Applications: ELISA, WB, IHC

Host: Rabbit

Datasheet

Version: 4.0.0
Revision date: 05 Mar 2025



Recommended dilutions: WB: 1/2000, IHC-P: 1/500. Not tested in IHC-F. Optimal dilutions/concentrations should be determined by the end user.

Conjugation: Unconjugated

Immunogen: KLH-conjugated synthetic peptide between 12-42 amino acids from the N-terminal region of human SOST.

Isotype: IgG

Form: Liquid

Purification: Purified through a protein A column, eluted with high and low pH buffers and neutralized immediately, followed by dialysis against PBS.

Storage: Aliquot and store at -20°C. Avoid repeated freeze/thaw cycles.

UniProt Primary AC: Q9BQB4 ([UniProt](#), [ExPASy](#))

NCBI Accession: NP_079513.1

String: [9606.ENSP00000301691](#)

Molecular Weight: Calculated MW: 24 kDa

Buffer: PBS containing 0.09% sodium azide.

Specificity: Predicted to react with Cow SOST.

Note: THIS PRODUCT IS FOR RESEARCH USE ONLY. NOT FOR USE IN DIAGNOSTIC, THERAPEUTIC OR COSMETIC PROCEDURES. NOT FOR HUMAN OR ANIMAL CONSUMPTION.