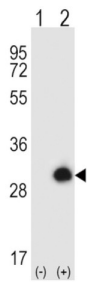
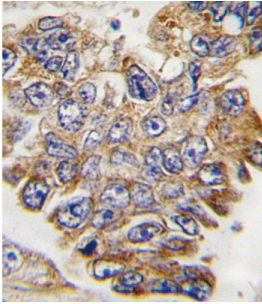


## Growth Factor Receptor Bound Protein 2 (GRB2) Antibody

Catalogue No.: abx032777



GRB2 binds the epidermal growth factor receptor and contains one SH2 domain and two SH3 domains. Its two SH3 domains direct complex formation with proline-rich regions of other proteins, and its SH2 domain binds tyrosine phosphorylated sequences. This gene is similar to the Sem5 gene of *C.elegans*, which is involved in the signal transduction pathway.

**Target:** Growth Factor Receptor Bound Protein 2 (GRB2)

**Clonality:** Polyclonal

**Reactivity:** Human

**Tested Applications:** ELISA, WB, IHC

**Host:** Rabbit

**Recommended dilutions:** WB: 1/1000, IHC-P: 1/10 - 1/50. Not tested in IHC-F. Optimal dilutions/concentrations should be determined by the end user.

**Conjugation:** Unconjugated

**Immunogen:** KLH-conjugated synthetic peptide between 187-216 amino acids from human GRB2.

**Isotype:** IgG

**Form:** Liquid

# Datasheet

Version: 1.0.0  
Revision date: 06 Oct 2024



<b>Purification:</b>	Purified through a protein A column, followed by peptide affinity purification.
<b>Storage:</b>	Aliquot and store at -20°C. Avoid repeated freeze/thaw cycles.
<b>UniProt Primary AC:</b>	P62993 ( <a href="#">UniProt</a> , <a href="#">ExPASy</a> )
<b>KEGG:</b>	hsa:2885
<b>String:</b>	<a href="#">9606.ENSP00000376345</a>
<b>Molecular Weight:</b>	Calculated MW: 25.2 kDa
<b>Buffer:</b>	PBS containing 0.09% sodium azide.
<b>Specificity:</b>	Predicted to react with Mouse, Rat and Xenopus GRB2.
<b>Note:</b>	This product is for research use only.

For Reference Only