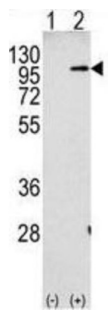
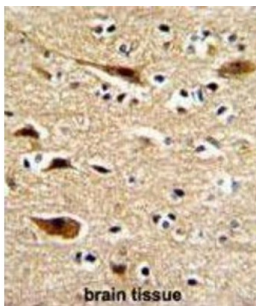
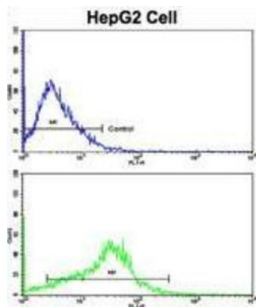


Amyloid-beta Precursor Protein (APP) Antibody

Catalogue No.: abx032791



APP is a cell surface receptor and transmembrane precursor protein that is cleaved by secretases to form a number of peptides. Some of these peptides are secreted and can bind to the acetyltransferase complex APBB1/TIP60 to promote transcriptional activation, while others form the protein basis of the amyloid plaques found in the brains of patients with Alzheimer disease. Mutations in this gene have been implicated in autosomal dominant Alzheimer disease and cerebroarterial amyloidosis (cerebral amyloid angiopathy).

Target: Amyloid-beta Precursor Protein (APP)

Clonality: Polyclonal

Reactivity: Mouse

Tested Applications: ELISA, WB, IHC, FCM

Host: Rabbit

Datasheet

Version: 2.0.0

Revision date: 03 Dec 2024



Recommended dilutions:	WB: 1/2000, IHC-P: 1/10 - 1/50, FCM: 1/10 - 1/50. Not tested in IHC-F. Optimal dilutions/concentrations should be determined by the end user.
Conjugation:	Unconjugated
Immunogen:	KLH-conjugated synthetic peptide between 29-61 amino acids from the N-terminal region of human APP.
Isotype:	IgG
Form:	Liquid
Purification:	Purified through a protein G column, eluted with high and low pH buffers and neutralized immediately, followed by dialysis against PBS.
Storage:	Aliquot and store at -20°C. Avoid repeated freeze/thaw cycles.
UniProt Primary AC:	P05067 (UniProt , ExPASy)
NCBI Accession:	NP_000475.1, NP_001129488.1, NP_001129601.1, NP_001129602.1, NP_001129603.1, NP_001191230.1, NP_001191231.1, NP_001191232.1, NP_958816.1, NP_958817.1
Molecular Weight:	Calculated MW: 86.9 kDa
Buffer:	PBS containing 0.09% sodium azide.
Specificity:	Predicted to react with Monkey APP.
Note:	This product is for research use only.

For Reference Only