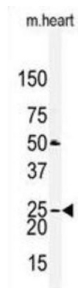
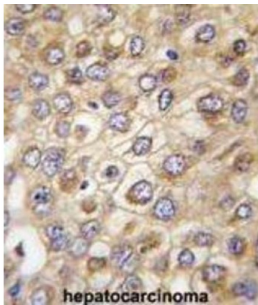


Claudin 2 (CLDN2) Antibody

Catalogue No.: abx032793



Members of the claudin protein family, such as CLDN2, are expressed in an organ-specific manner and regulate the tissue-specific physiologic properties of tight junctions.

Target:	Claudin 2 (CLDN2)
Clonality:	Polyclonal
Reactivity:	Human
Tested Applications:	ELISA, WB, IHC
Host:	Rabbit
Recommended dilutions:	WB: 1/1000, IHC-P: 1/10 - 1/50. Not tested in IHC-F. Optimal dilutions/concentrations should be determined by the end user.
Conjugation:	Unconjugated
Immunogen:	KLH-conjugated synthetic peptide between 135-164 amino acids from the N-terminal region of human Claudin 2 (CLDN2).
Isotype:	IgG
Form:	Liquid

Datasheet

Version: 2.0.0
Revision date: 23 Nov 2024



Purification:	Purified through a protein A column, followed by peptide affinity purification.
Storage:	Aliquot and store at -20°C. Avoid repeated freeze/thaw cycles.
UniProt Primary AC:	P57739 (UniProt , ExPASy)
NCBI Accession:	NP_001164563.1, NP_001164566.1, NP_065117.1
KEGG:	hsa:9075
String:	9606.ENSP00000441283
Molecular Weight:	Calculated MW: 24.5 kDa
Buffer:	PBS containing 0.09% sodium azide.
Specificity:	Predicted to react with Mouse and Cow CLDN2.
Note:	This product is for research use only.

For Reference Only